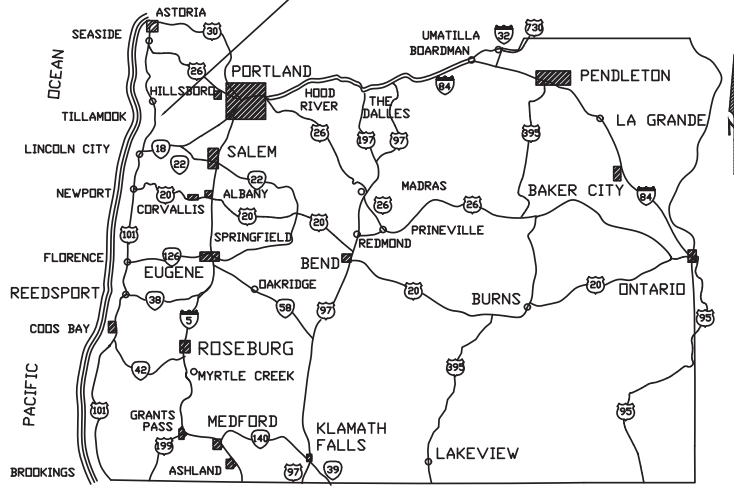
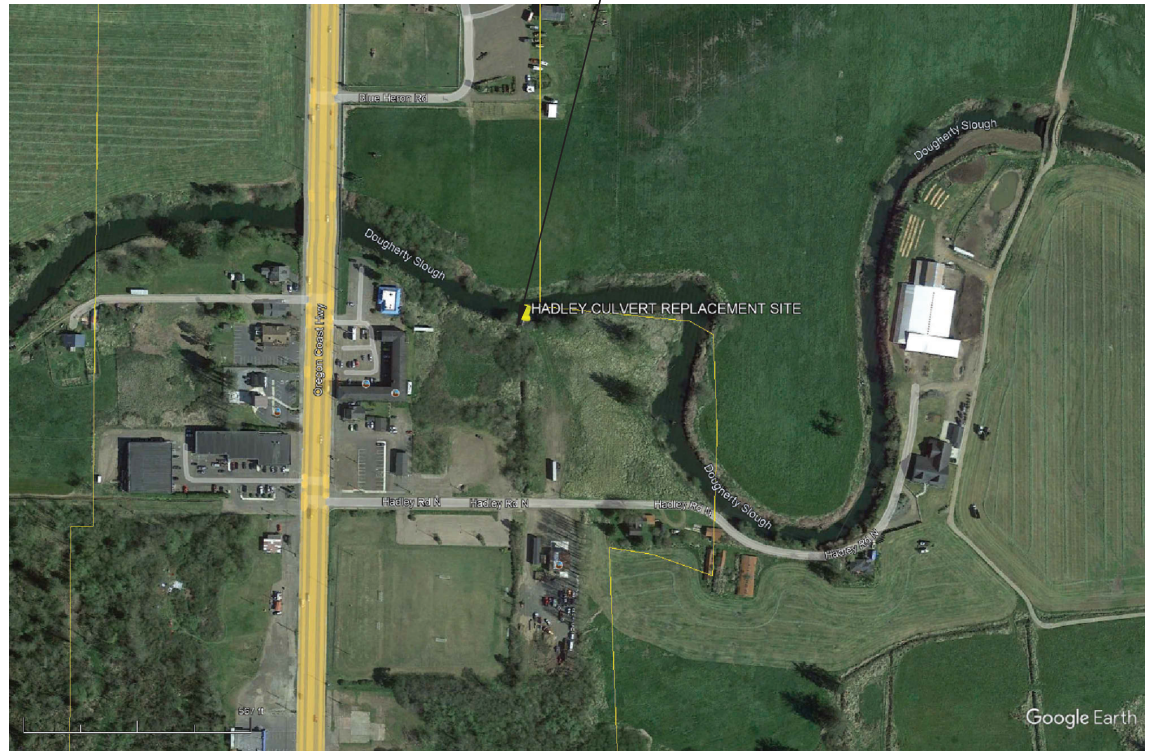


PROJECT LOCATION



STATE OF OREGON

CULVERT REPLACEMENT SITE
 Latitude & Longitude* (in DD.DDDD format)
 45.46462 degrees N, 123.84250 Degrees W

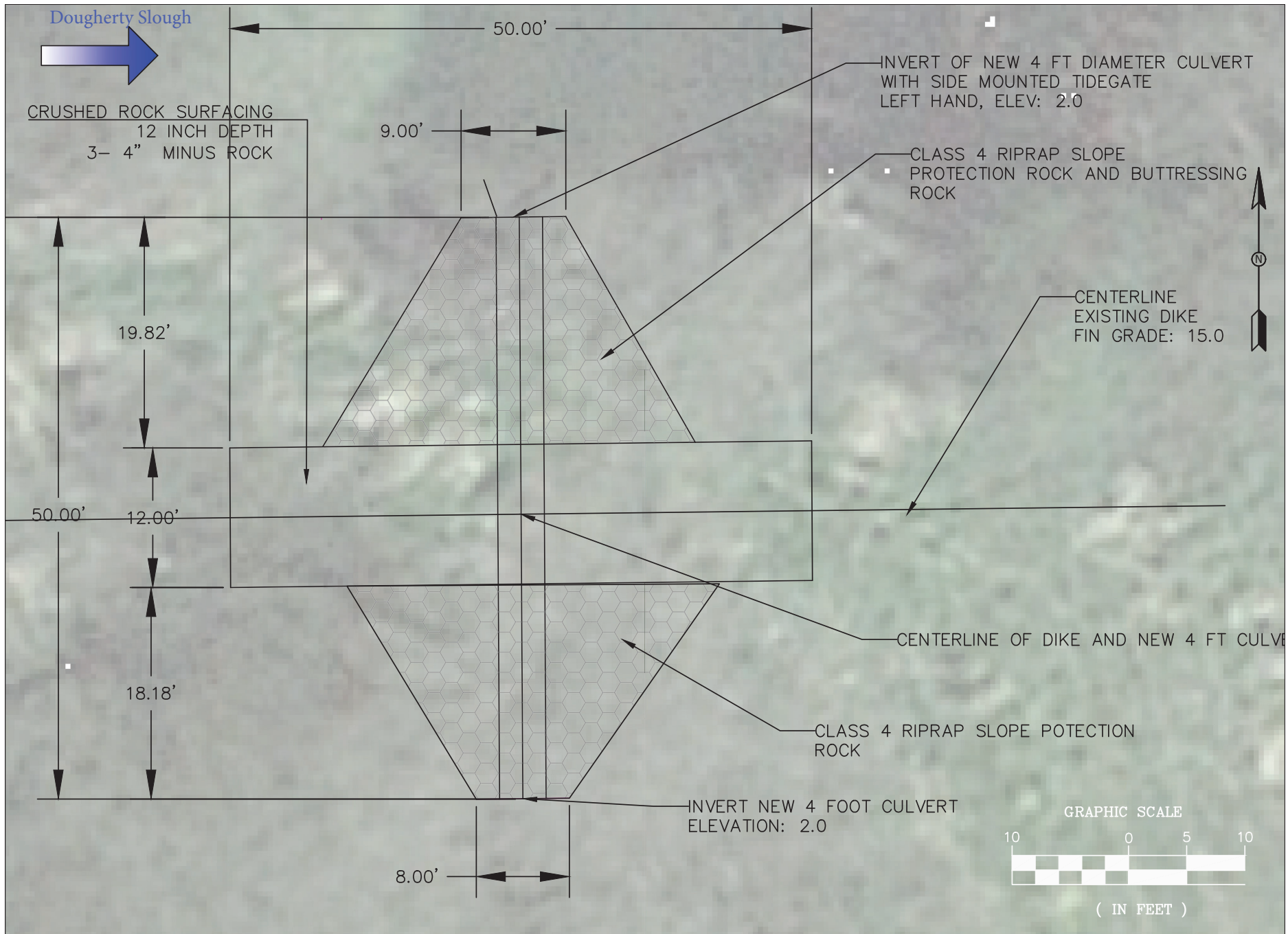


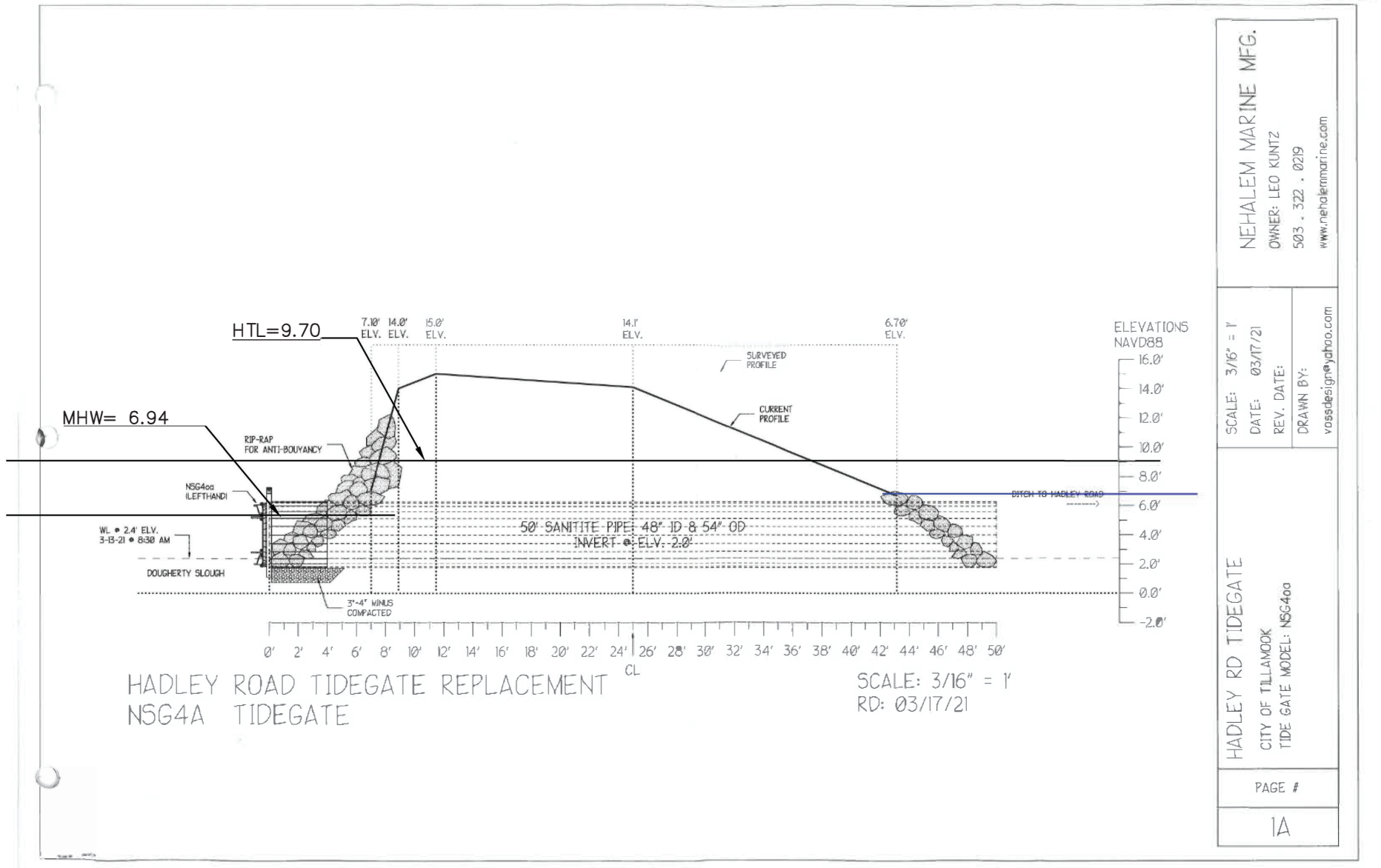
CITY OF TILLAMOOK
 HADLEY ROAD CULVERT REPLACEMENT

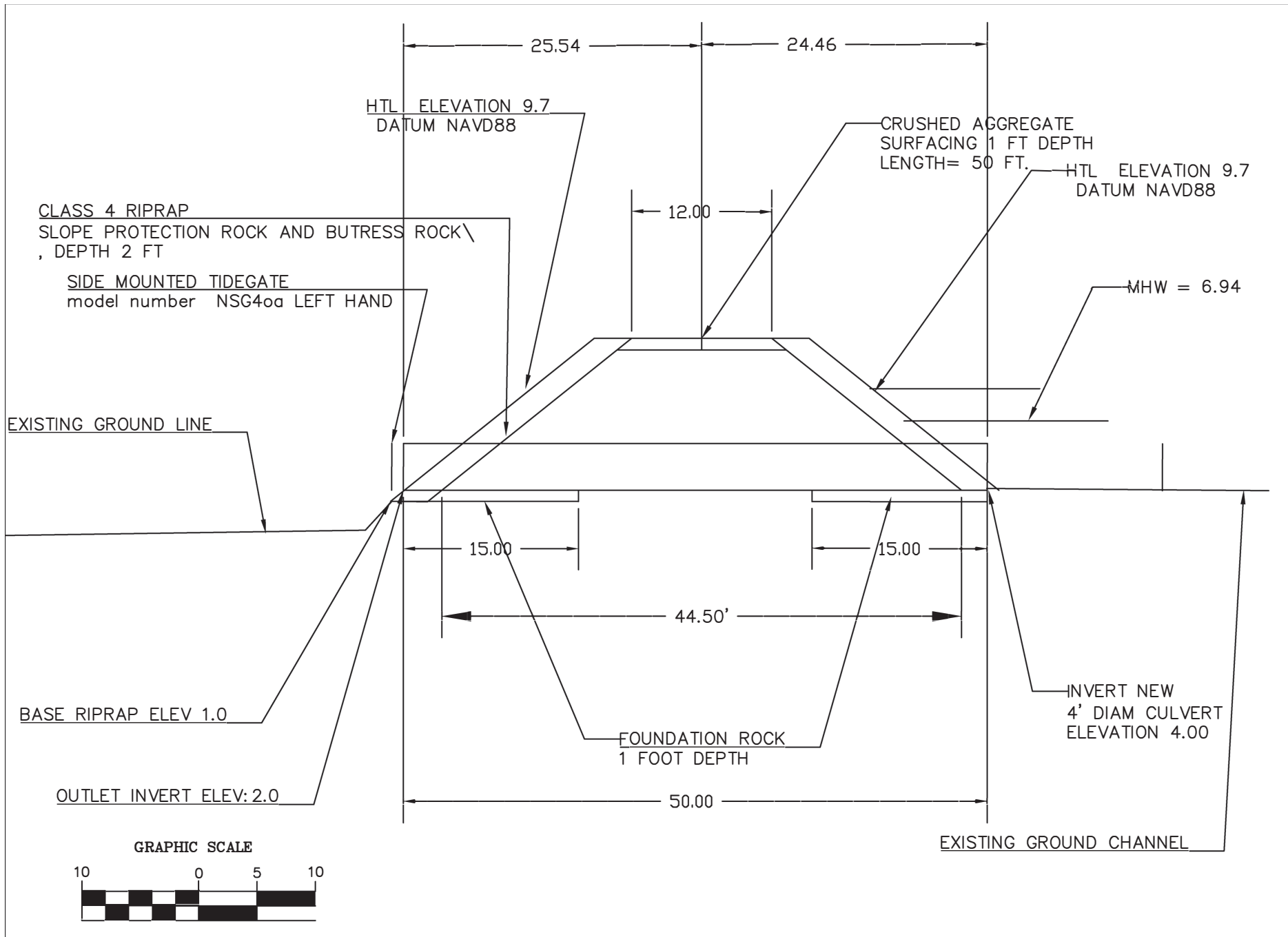
VICINITY MAP

REVISION DATE
 25 APRIL 2024

DRAWINGS
 NUMBER : 1







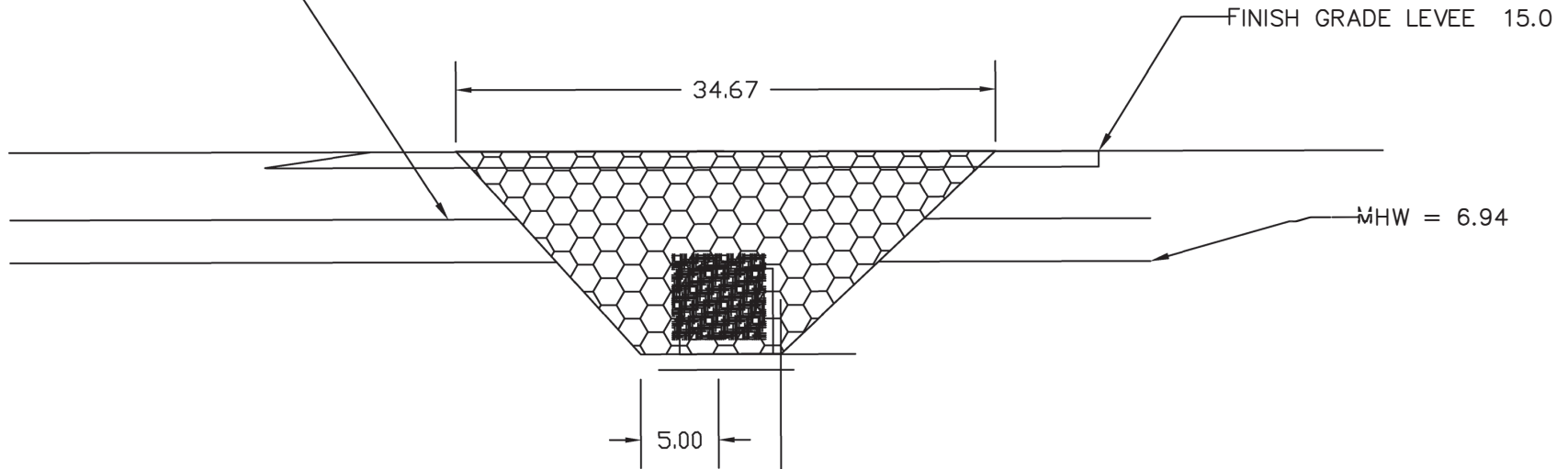
(IN FEET)
 CITY OF TILLAMOOK
 HADLEY ROAD CULVERT REPLACEMENT

CULVERT PROFILE

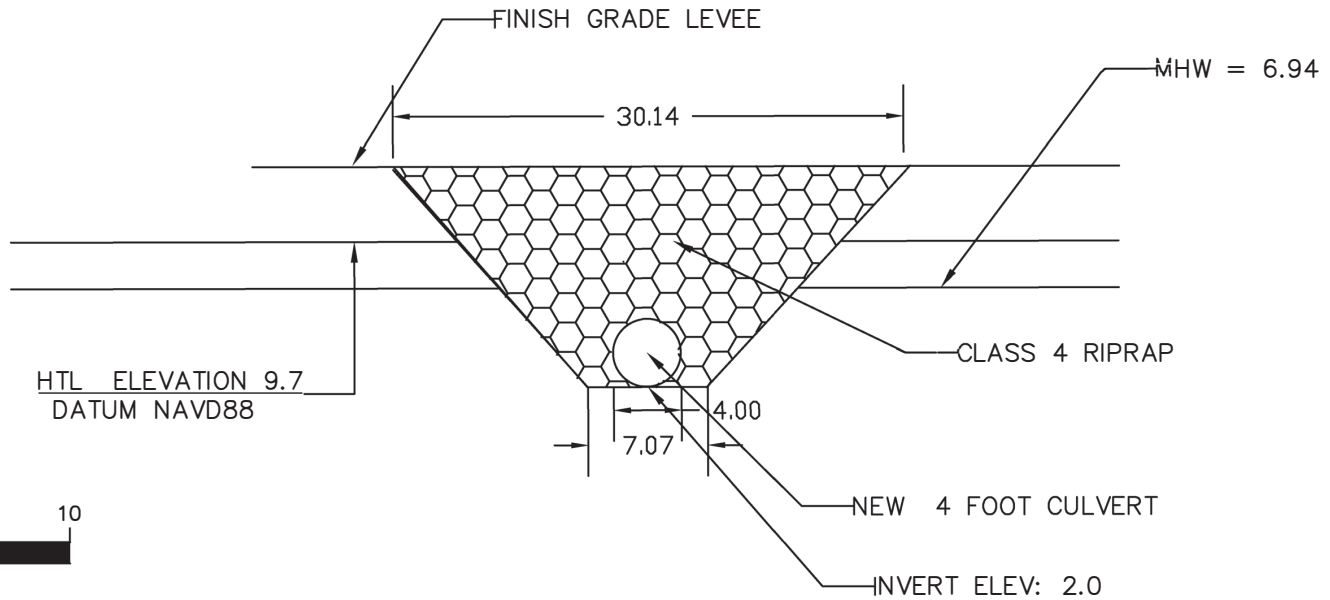
REVISION DATE
 25 APRIL 2024

DRAWINGS
 NUMBER: 4

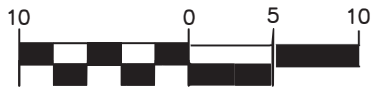
HTL ELEVATION 9.7
DATUM NAVD88



SECTION ELEVATION VIEW CULVERT OUTLET WITH TIDE GATE



GRAPHIC SCALE



SECTION VIEW CULVERT INLET